



Zebra Rugged Tablets

Portfolio Overview

Rugged mobility to get the job done.
Anywhere. In any condition.
In lightning-fast time.



See More. Do More.

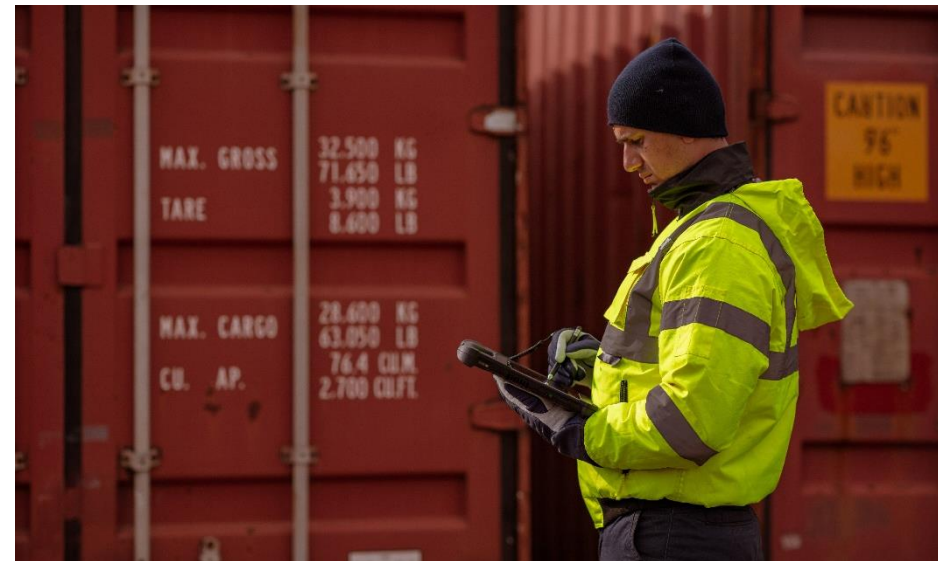
You asked:

- Your users want bigger screens in their mobility tools.
- Rugged durability—from the inside and out—is a must.
- Fast performance is critical to keep operations moving.



We answered: Xplore

- Incredibly rugged tablets
- Impressive specs
- Innovative designs



Your Business Demands the Best

Zebra delivers it. Purpose-built with you in mind.



Zebra + Xplore

Industry-leading
tools to get the job
done—no matter the
conditions.

Meet Zebra's **Tablet Portfolio:**



ET5x Series

Surprisingly Rugged.
Thin and Lightweight.



L10 Series

The Most Powerful, Versatile &
Rugged Tablets in the Industry.



XSlate R12

Big, Bright Screen.
Lightest Weight in its Class.

ET5x Series

Surprisingly Rugged. Thin and Lightweight.

Avoid glass failure with Corning® Gorilla® Glass 3 with Native Damage Resistance™

Connectivity options to get the job done—inside (WLAN) or outside (WLAN+WAN)






Available in two sizes: 8 inch or 10 inch, both under 1.7 lbs.

Windows or Android models; both drop and IP rated

Add optional technology to capture 1D or 2D barcodes, now or later



Major Benefits of the ET5x Series

-  Bright screen is easy to read in intense daylight.
-  Durable design withstands drops, bangs, bumps, dust and liquids.
-  Outstanding roaming, locationing and connectivity.
-  Replace batteries onsite and hot swap them with an auxiliary battery.
-  Thin and lightweight for maximum portability.

ET50 (WLAN) Android™
ET51 (WLAN) Windows®

ET55 (WLAN) Android
ET56 (WLAN) Windows



Far from even commercial grade. Rugged and full of features.

L10 Series

Seriously Rugged. Incredibly Versatile.

Rugged specs that outperform and over deliver—in the harshest conditions

Easy-to-read 10" screen—inside and outside, day or night

Powerful processing and connectivity to complete tasks faster, anywhere

Long-lasting design for years of operation

Different models for varying use: tablet, tablet + hard handle, and 2-in-1 laptop/tablet

Windows platform for custom configuration

Tolerates shocks, vibration and extreme temperature changes—even cold-storage facilities



Meet the Players:



XSlate L10: The Tablet **Powerful Ruggedness**

- Stronger than steel magnesium frame; lighter than aluminum
- Rubber corner bumpers add shock durability
- Twist proof, even after 6-foot drops
- Gorilla® Glass and auto-sensing glove/wet-touch technology function in rain, snow and cold

Looks like a tablet, functions like a superstar.



XPad L10: Hard Handle **Gives You Added Power**

- All the features of the XSlate, plus a hard handle
- Perfectly balanced, ergonomic design for easy portability
- Optional, in-handle barcode reader expedites data entry

Durability and scanning power—in hand.



XBook L10: Not Your **Ordinary 2-in-1**

- Ideal laptop replacement
- Fully functional, removable keyboard
- Built-in KickStrap for use anywhere

Enter long-form data with ease. Mount in a vehicle. Use it on the back of a truck bed or at your desk.

XSlate R12

Rugged Redefined. Spectacular Screen.

Industry's brightest 12.5" display to see more data on one screen

Customizable to meet any worker's needs, even 2-in-1 use

Fast speeds, touch, pen, voice and camera inputs

Rugged to handle harsh environments

Stunningly high resolution



Visibility, Durability and Features you Need. In One Tablet.

XSlate R12



Sleek, award-winning, rugged design



Outstanding sunlight viewability



Powerful processing to accomplish tasks



Hot swap battery with charge indicator



Highly secure



Accessories

Customize Your ET5x Tablet to Meet Your Needs

Full Dock



C/O Cradle



Carrying Options



Rugged Frame



Rotating Handstrap



Expansion Backs with options for integrated scanners



PowerPack Battery Extender (6,800mAh)



Accessories

Customize Your L10 Tablet to Meet Your Needs



Accessories

Customize Your R12 Tablet to Meet Your Needs



Transportation & Logistics:



Improve Customer Service

- On-time pickup and delivery
- Ability to address any customer question, on the spot



Faster Order-to-cash Cycle

- Ability to transmit proof of delivery in real-time speeds the billing cycle time



Reduce Costs

- Improved workforce utilization reduces labor costs; timely maintenance extends vehicle lifecycles; more efficient routes = less miles = less gas



Improve Workforce Productivity

- Same number of drivers can now make more stops per day



Manufacturing:



Improve Customer Service

- On-time delivery of orders



Improve Workforce Productivity

- Same staff can handle more work orders per day



Reduce Costs

- No more unplanned downtime
- Timely replenishment of the production line with the right materials
- Real-time inventory and order visibility enables more inventory turns, reducing holding inventory and carrying costs
- Preventative maintenance is performed on time and real-time equipment monitoring enables issues to be spotted and resolved — before they impact the production line



Utilities:



Improve User Efficiency

- Personnel have up-to-date information, improving service request management, GIS usage and inventory control



Reduce Errors

- Real-time processes prevent errors and ensure accuracy of everything from vegetation management and billing to vehicle maintenance



Reduce Costs

- Timely inspections and maintenance prevents unplanned asset downtime and repair costs, and extends the asset lifecycle; real-time asset tracking helps increase asset utilization and prevent purchase of unneeded assets



Public Safety:



Improve User Safety

- Personnel have up-to-date information before encountering potentially dangerous situations



Reduce Errors

- Real-time processes prevent errors and ensure timely accuracy of everything from warrants to evidence collection to safety inspections



Reduce Costs

- High performance, superior wireless throughput, unsurpassed ruggedness and reliability and direct sunlight viewability means you can work with less downtime and more efficiency, to deploy budgets in more life-saving areas



Retail:



Improve Customer Service

- Create the full-service associate who can serve every customer's need, right in the aisle, able to answer questions and complete a purchase



Improve Workforce Productivity

- Same number of associates can help more customers and handle more tasks per day
- Swappable batteries eliminate the need to plug-in just to recharge
- Lightweight models for all-day use without bulky bag or carts



Reduce Costs

- Improved workforce utilization reduces labor costs



Increase Sales with Line Busting and Mobile POS

- Line busting and Mobile POS help prevent walk-aways and lost sales



Warehouse:



Improve Customer Service

- Dependable on-time deliveries of the right items to the right customers



Increase Revenue

- Order processing capacity is increased¹_{SEP}
- Better inventory management reduces lost sales due to stockouts



Improve Workforce Productivity

- The same number of workers can handle more work orders per day



Reduce Costs

- Improved workforce utilization reduces labor costs; better inventory management — more inventory turns and lower carrying costs



Field Mobility:



Improve Customer Service

- Better inventory management, information access and on- site collaboration increases first-time fix rates, customer satisfaction and retention rates



Increase Revenue

- Ensure accurate capture of all chargeable parts and labor
- Improve cash flow with quicker turnaround for invoices



Improve Workforce Productivity

- Same number of technicians can handle more work orders
- Manuals on the tablet mean no paper to lug anymore



Reduce Costs

- Improved workforce utilization reduces labor costs; more accurate inventory reduces carrying costs



Thank You



ZEBRA and the stylized Zebra head are trademarks of Zebra Technologies Corp., registered in many jurisdictions worldwide. All other trademarks are the property of their respective owners. ©2019 Zebra Technologies Corp. and/or its affiliates. All rights reserved.